

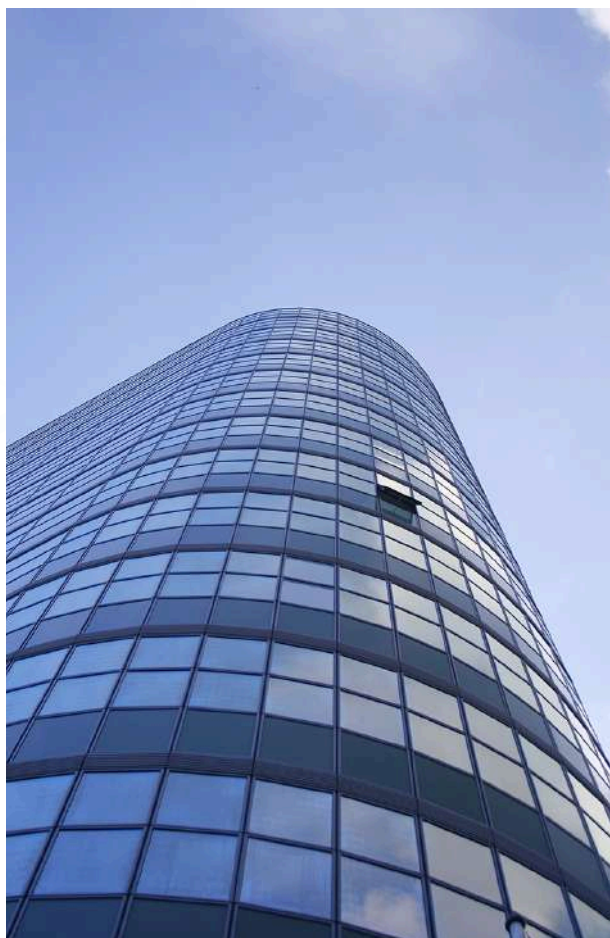
“Water is life, our **Mission** & **vision**
is for water”



Company Profile

VELIENT PEC INDIA PRIVATE LIMITED is manufacturing enterprise of PEC group since 2006. We are located in the city which known worldwide as the biggest diamond and silk city Surat, Gujarat, India.

We started importing membranes for pan-India from the year 2007. Through market researchers we came to know that the membrane models available in the world are not suitable for Indian water conditions.



Hence to fulfil the need of Indian family, we introduced customised membrane models first time in India's market and they become very popular in a very short time across our markets.

By our customer's feedback, experiences and the guidance of our global research partner, we ONTOZ has adopted the class of scientific innovation based very keen and detailed water analysis across the India to invent a membrane which is unique in performance and excellent in shelf life.

As the rising demand of our membranes in Indian market as well as world market, to meet quantity with the optimum quality, we are the first India based company to have manufacturing facility with the global partner DONG YANG LAICHI TECHNOLOGY CO. LTD, China and PENCA RO Systems, Vietnam. At our facility we have developed fully energetic, passionate and efficient work culture to produce 'Zero Defect' consistent quality production. Getting Inspired from the 'Make in India' initiative launched by Prime Minister Shree Narendra Modi in the year of 2014.

We Velient PEC India Pvt. Ltd. Introduced India's most equipped automatic membrane manufacturing facility. At present we are India's largest OEM membranes manufacturer with the capacity of 6000 pcs/day as on year 2022.

As morality, integrity and sincerity is utmost important for any establishment, pursue innovation, customer oriented product development and customers satisfaction after sales is our top priority. We have established long term co-operation locally as well as globally. We are also proud to be a part of "MAKE IN INDIA" and "आत्मनिर्भर भारत" (Self dependent India).

Yes, Why "PEC"? Perfection, Excellent, Class. "We create self value, customer value and value for the society".

Corporate Culture

Mission 01

Core Value 03

Solution 05

Our Products 07

Vision 02

Problem 04

Work Style 06

Who We Are?

2016

**Foundation
&
Expansion**

100+

Employees



**World Wide
Global Partner**

6000

**Per day
Production
Capacity**

**Quality is our first
priority**

At ONTOZ, we are committed to revolutionizing water filtration with cutting-edge membrane technology. As a leading manufacturer of high-performance membranes for both domestic and industrial applications, we deliver innovative, reliable, and efficient solutions for pure, safe, and sustainable water.

Our domestic membranes cater to diverse household needs, offering High TDS, High Flow, and Regular Flow models to ensure clean drinking water, even in challenging conditions.

For industrial applications, we provide specialized membranes, including ULP (Ultra Low Pressure), LPBW (Low Pressure Brackish Water), BWFR (Brackish Water Fouling Resistant), and SW (Seawater Desalination), designed to handle various water purification demands with optimal efficiency and durability.

With a commitment to quality, innovation, and sustainability, ONTOZ is your trusted partner in advanced water filtration solutions.



Our Mission

Pure Water, Made in India! 💧

At ONTOZ, we are dedicated to revolutionizing water filtration with cutting-edge Made in India membranes. Our mission is to deliver high-performance, reliable, and sustainable solutions for homes and industries, ensuring access to clean water while driving innovation and self-reliance in Indian manufacturing.



Problem

97.5%

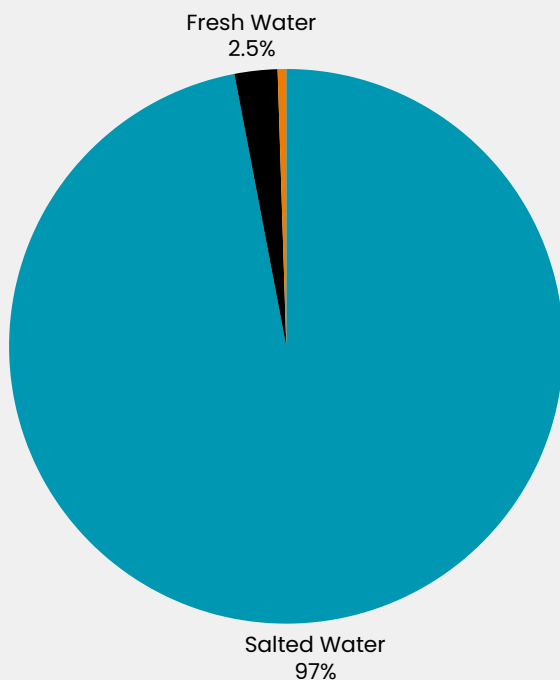
Earth's water is
saltwater

2.5%

Fresh water

Less than
0.5%

Earth's total water is usable
for human consumption!



- 68.7% of freshwater is trapped in glaciers & ice caps.
- 30.1% is in underground sources.
- 1.2% is surface water (lakes, rivers, etc.).


This highlights the urgent need for advanced filtration solutions to maximize the availability of clean, drinkable water.

Solution

ONTOZ – The Future of Pure Water 💧

Water filtration comes with challenges, but ONTOZ brings the solution!

Our advanced domestic and industrial membranes tackle high TDS, fouling, wastage, and sustainability issues, ensuring efficient, high-performance, and eco-friendly filtration.

With cutting-edge technology and a commitment to "Make in India," we deliver pure water solutions for every need! 



Our Solution Goal

At ONTOZ, our goal is to revolutionize water filtration by providing high-performance, long-lasting, and eco-friendly membranes for both domestic and industrial use. We strive to:



Reduce Water Wastage with advanced membrane efficiency



Enhance Filtration Performance for high TDS & contaminants



Ensure Sustainable & Cost-Effective Solutions



Working Style

At ONTOZ, quality comes first! We follow a step-by-step, technology-driven process to ensure the best water filtration solutions. From importing premium membrane sheets to rigorous testing, automated production, and final quality checks, every step is designed for efficiency, durability, and excellence.



01

Precision Testing & Selection

We begin by importing premium membrane sheets and conducting rigorous sample testing to ensure top-notch quality before production.

02

Advanced Automated Production

With cutting-edge automation and technology, we manufacture membranes with precision, efficiency, and strict quality control for superior performance.

03

Final Testing & Secure Packaging

Every membrane undergoes post-production testing for reliability. Once fully approved, we pack in high-quality bags & boxes and deliver to our clients with care & commitment. 🚚💙



Our Products

A diverse range of high-quality products designed for efficiency, durability, and superior performance in both industrial and domestic applications.

Industrial & Domestic Series

Our diverse product family includes high-quality industrial and domestic solutions designed for efficiency, durability, and performance. From robust machinery and tools for industrial applications to household essentials that enhance daily living, our range meets the highest standards of reliability and innovation. Whether for professional or personal use, our products deliver superior functionality and long-lasting value.



Booster Pumps

A booster pump enhances water pressure and flow for homes, buildings, and industrial use. It ensures a steady, efficient, and reliable water supply with durable performance.



DOMESTIC MEMBRANE TECHNICAL DATA

Model	Salt Rejection (%)	Avg. Permeate GPD (m ³ /d)	Testing Conditions		
			Pressure psi (MPa)	Concentration NaCl (ppm)	Recovery (%)
OT-1812-80RF	95%	80(0.30)	60(0.41)	1500	25
OT-1812-100RF	95%	100(0.38)			
OT-2012-110RF	95%	110(0.42)			
OT-3012-300RF	95%	300(1.14)			
OT-1812-80HF	96%	80(0.30)	75(0.51)	2000	30
OT-1812-100HF	96%	100(0.38)			
OT-2012-110HF	96%	110(0.42)			
OT-3012-300HF	96%	300(1.14)			
OT-1812-75HT	98%	75(0.28)	60(0.41)	1500	25
OT-1812-80HT	98%	80(0.30)			
OT-2012-100HT	98%	100(0.38)			
OT-3012-300HT	98%	300(1.14)			

INDUSTRIAL MEMBRANE TECHNICAL DATA

Model	Salt Rejection (%)	Avg. Permeate GPD (m ³ /d)	Active Membrane Area ft ² (m ²)	Testing Conditions at 25°C		
				Pressure psi (MPa)	Concentration NaCl (ppm)	Recovery (%)
OTA1-4021-LPBW	98.5	950(3.59)	36(3.34)	150(1.03)	1500	15
OTA1-4040-LPBW	98.5	2400(9.08)	85(7.9)			
OTA1-8040-LPBW	98.5	10300(38.99)	400(37.2)			
OTA2-4021-BWFR	99.0	900(3.40)	36(3.34)	225(1.55)	2000	15
OTA2-4040-BWFR	99.0	2200(8.33)	85(7.9)			
OTA2-8040-BWFR	99.0	10000(37.8)	400(37.2)			
OTA3-4021-ULP	97.5	1000(3.78)	36(3.34)	150(1.03)	1000	15
OTA3-4040-ULP	97.5	2600(9.84)	85(7.9)			
OTA3-8040-ULP	97.5	10500(39.74)	400(37.2)			
OTA4-4021-XLP	92.0	950(3.59)	36(3.34)	100(0.67)	500	15
OTA4-4040-XLP	92.0	2250(8.52)	85(7.9)			
OTA4-8040-XLP	92.0	10400(39.37)	400(37.2)			
OTS-4021-HRW	99.3	850(3.22)	36(3.34)	800(5.51)	32000	8
OTS-4040-HRW	99.3	2000(7.57)	85(7.9)			
OTS-8040-HRW	99.3	8500(32.17)	400(37.2)			
OTS1-4021-SW	99.4	800(3.02)	36(3.34)	800(5.51)	32000	8
OTS1-4040-SW	99.7	1900(7.19)	85(7.9)			
OTS1-8040-SW	99.7	7800(29.52)	400(37.2)			

Dimensions For Domestic Elements

A Total Length	B ATD Diameter	C Connection Out. Diameter	D Connection Hose Length
298 mm	46 mm	17 mm	21 mm



- (P) Permeate
- (F) Feed
- (Cn) Concentrate

Dimensions For 4040 Elements

A Total Length	B ATD Diameter	C Connection Out. Diameter	D Connection Hose Length
40.0 inches (1016 mm)	3.9 inches (99.7 mm)	0.75 inches (19.1 mm)	1.05 inches (26.7 mm)



- (P) Permeate
- (F) Feed
- (Cn) Concentrate

Dimensions For 8040 Elements

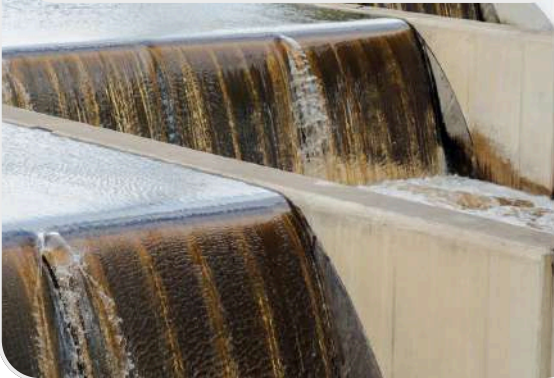
A Total Length	B ATD Diameter	C Connection Int. Diameter
40.0 inches (1016 mm)	7.89 inches (200 mm)	1.125 inches (28.6 mm)



- (P) Permeate
- (F) Feed
- (Cn) Concentrate

Service Sectors

Industrial & Commercial



Textile & Dyeing Industry



Medical & Pharmaceutical



Food & Beverages



Oil & Gas Mining



Dairy Products



Our Happy Clients



United to Care

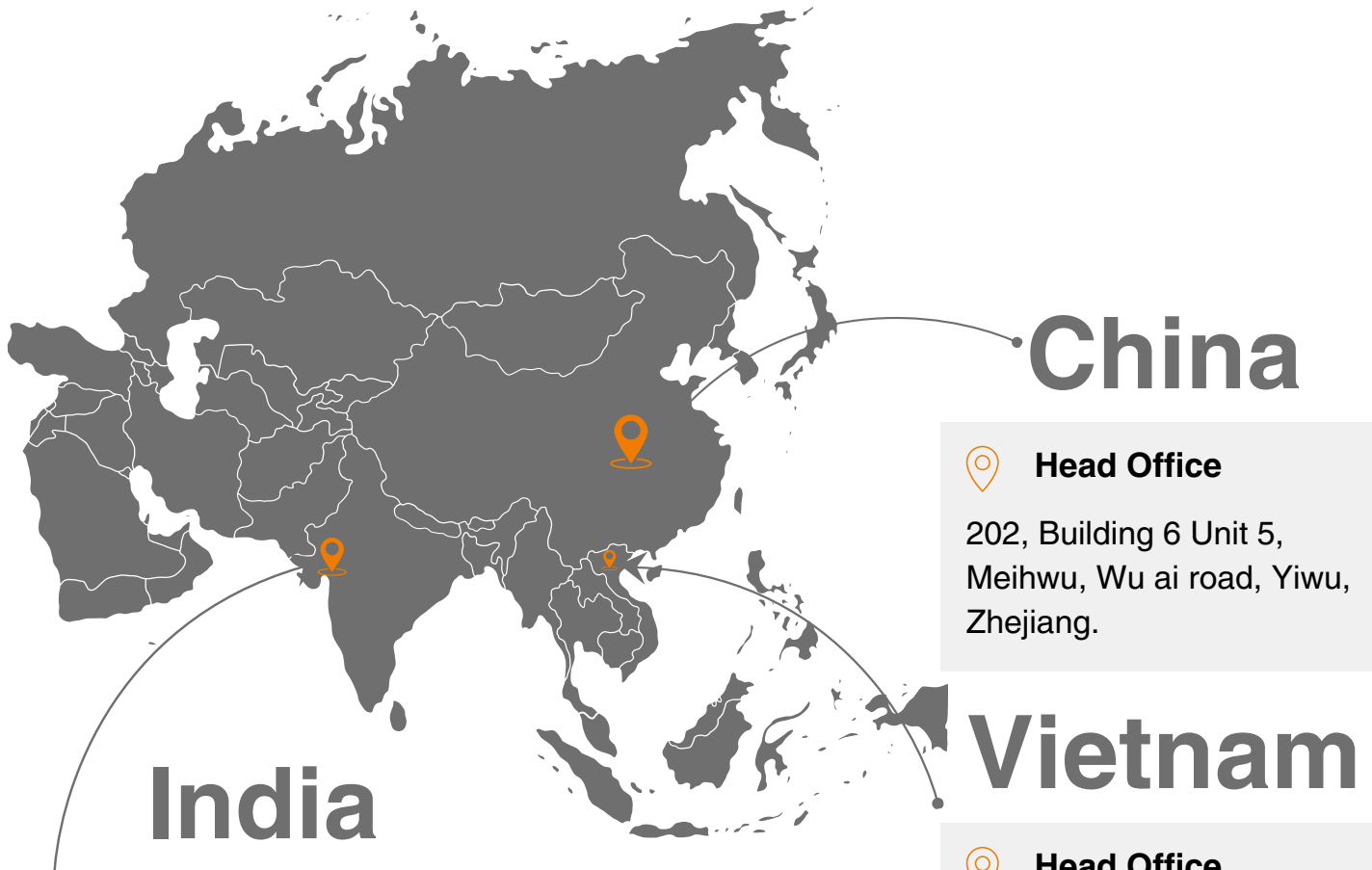


युनिटी+ हॉस्पिटल



FLONI[®]

Thanks



Head Office

B-101-107, Shivalik Plaza, Nr. Kapodra -
Utran Bridge, Utran, Surat - 394 105 (Guj.)
INDIA



Factory Unit - 1

65-70, Shivdhara Raschel Park, Gaay Pagla
Road, Dhoran Pardi, Kamrej, Surat-394 150
(Guj.) INDIA



Factory Unit - 2

UNIT C1 & C2, TECHNO ZONE, CANAL
ROAD, MANGROL, Mahuvej, Gujarat
394125



Factory Unit - 3

Shed No 29, Satvabhumi Industrial Estate,
Bakrol Road Bakrol Bujarang, Daskroi,
Ahmedabad-382430



Head Office

202, Building 6 Unit 5,
Meihwu, Wu ai road, Yiwu,
Zhejiang.



Head Office

10-112 Ba Trieu St, Nguyen
Du Ward, Hai Ba Trung Dist,
Hanoi Factory address:
Lane C4 Dai Dong Hoan
Son Industry Zone, Hoan
Son Commune, Tien Du
Dist, Bac Ninh, Vietnam.

VELIENT PEC INDIA PVT.LTD

Contact : +91 84859 03535 / +91 84859 03500
E-mail : info@ontoz.in

www.ontoz.in